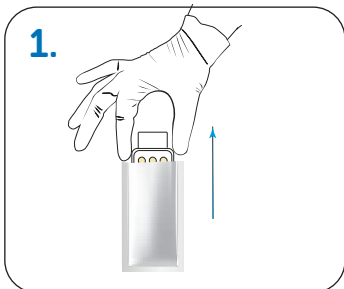
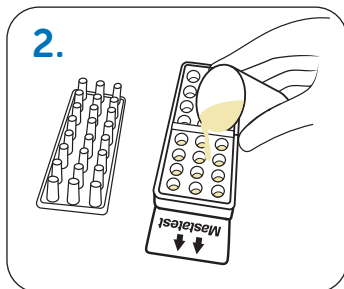


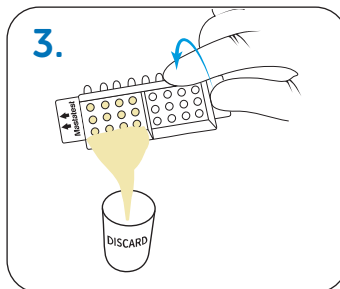
# Mastatest Twin Cartridge testing guide



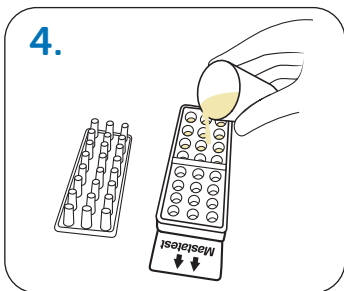
1. Put on clean gloves and remove a twin cartridge from packaging



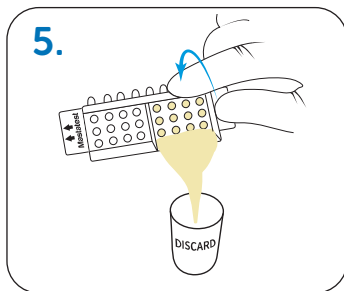
2. Remove cartridge lid and place upside down. Half-fill chamber 1 with milk sample 1.



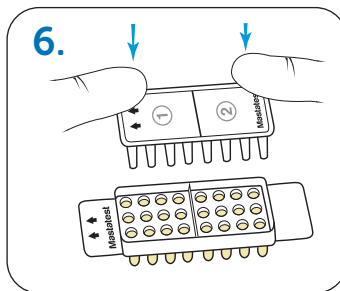
3. Pour off surplus milk from chamber 1 and discard



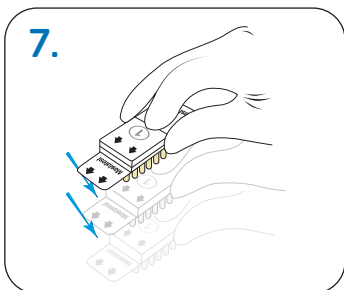
4. Half-fill chamber 2 with milk sample 2



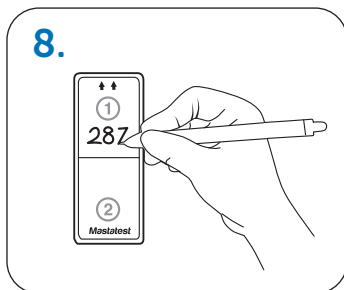
5. Pour off surplus milk from chamber 2 and discard



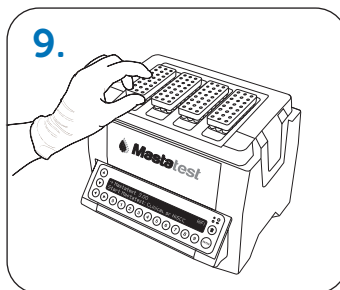
6. Replace lid, ensuring the arrows align with those on the base. Press down firmly to close.



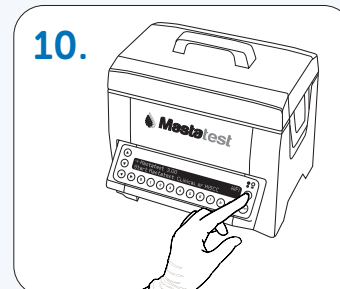
7. Tap firmly 2-3 times, repeating if air-bubbles are visible in the wells



8. Label cartridge lid with correct cow numbers for samples 1 and 2



9. Insert cartridge into Lapbox with the arrows facing to the back, and replace the lid



## Start a Mastatest

1. Start position defaults to first available. **ENTER** to confirm, or scroll **◀ ▶** to chosen position, then **ENTER**

Cartridge type should be automatically detected.

If not select Twin **▼ ENTER**

2. Select **BoxStart** **ENTER**, or **WebStart** **▼ ENTER**

3. Enter animal details:

- BoxStart: Enter animal number eg: **1 2 3 ENTER** and scroll to select quarter **▼ ENTER**

- WebStart: Enter at [mastatestsystem.com](https://mastatestsystem.com)

- When test has started, a countdown timer shows on screen. Further tests can be started at any time.
- **⏮** to return to prior screen.
- Long-press **⏮** to delete.
- To check or cancel a test in progress, scroll to select position **◀ ▶ ENTER**, then **ENTER** to check or **▼ ENTER** to cancel.



[mastatest.com/customer-support](https://mastatest.com/customer-support)