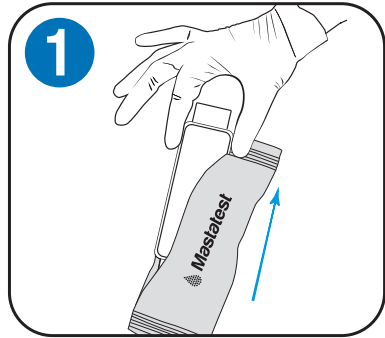
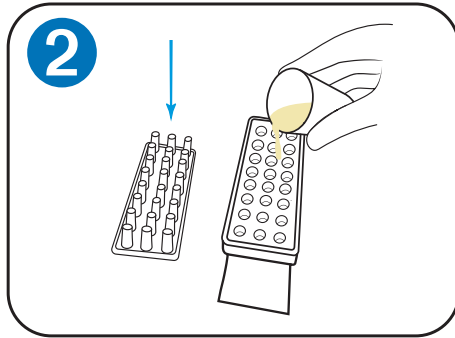


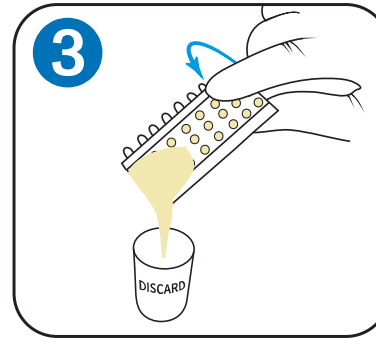
Start a Mastatest® on MastaCube®



1 Put on clean gloves and remove cartridge from pack.

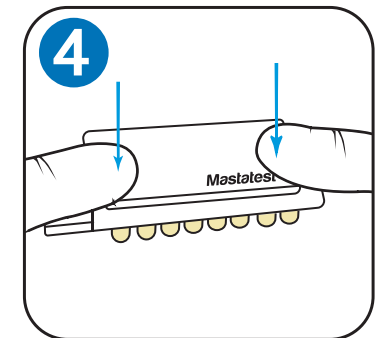


2 Remove cartridge lid, placing it on its flat back. Half-fill cartridge with milk.

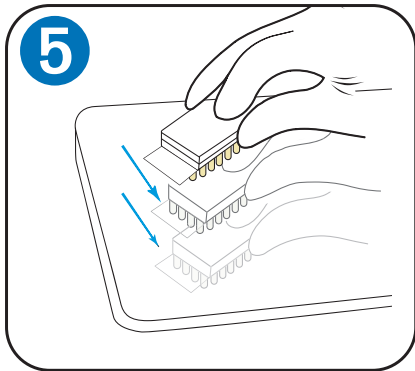


3 Pour off surplus milk and discard.

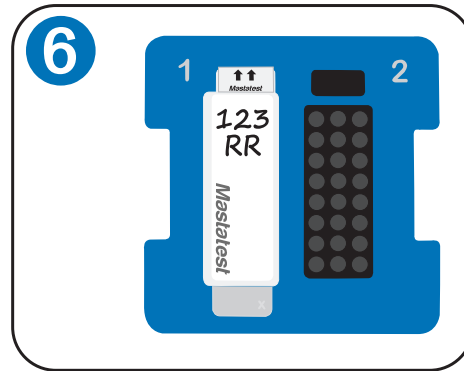
Repeat steps 2 and 3 using the second milk sample, if you are starting a Twin (2 sample) test.



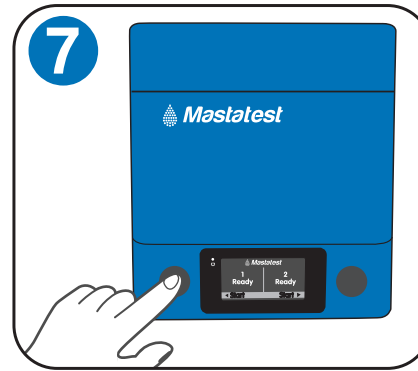
4 Press lid on firmly. Label with animal ID.



5 Tap firmly 2-3 times.




6 Place in MastaCube with arrows to the back, and replace lid.




7 Press the button corresponding to the start position (left for position 1, right for position 2)

8 Enter Animal ID


Scan QR code with phone **or**



mastatestsystem.com



In portal **or**



Using attached USB keyboard

For further information, videos and user guides:
www.mastatest.com/mastacube

