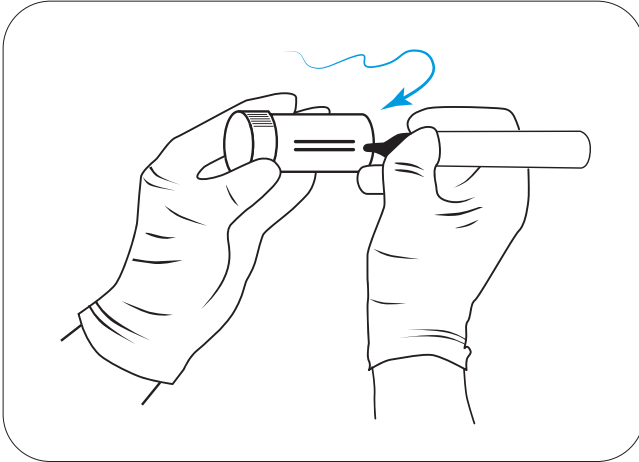
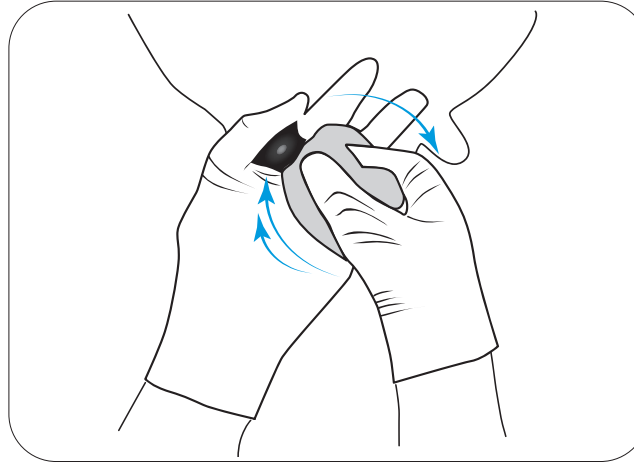


Mastatest TAKING A MILK SAMPLE



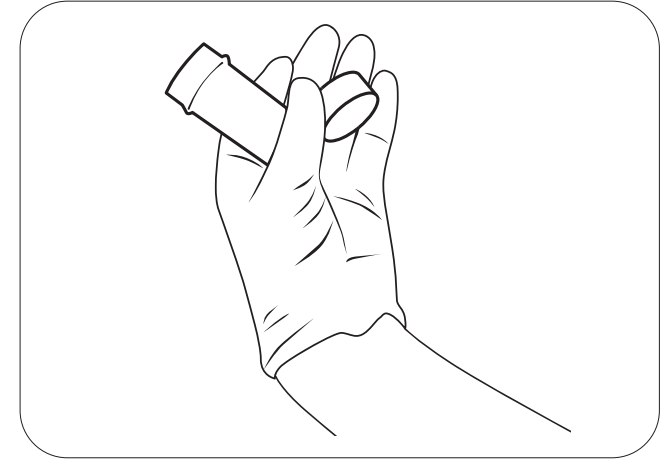
LABEL:

Put on clean gloves, and write cow number and quarter on sample container.



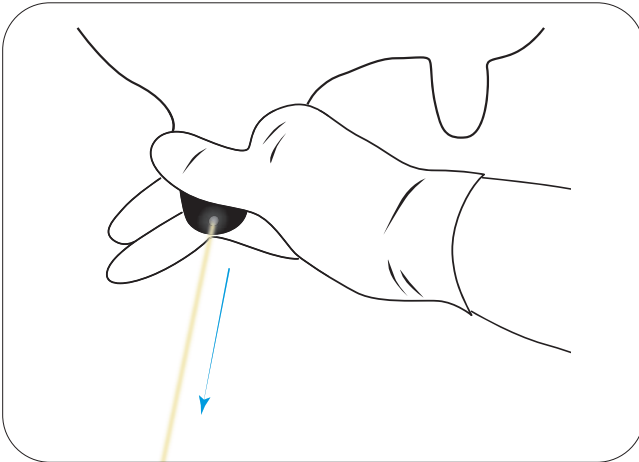
CLEAN:

Clean teat with a teat wipe.



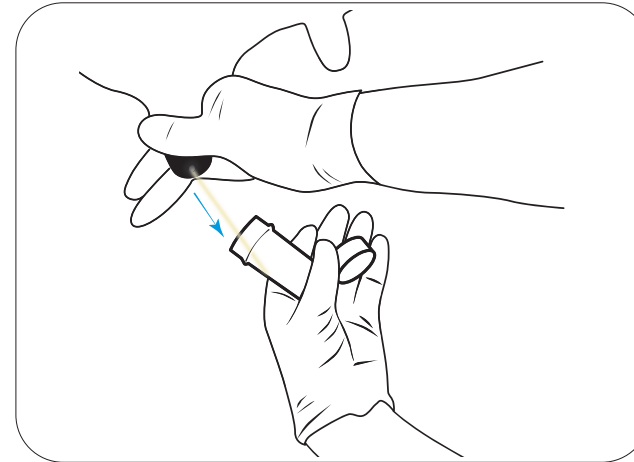
PREPARE:

Remove the lid from the sample container, taking care not to touch lid or inside container.



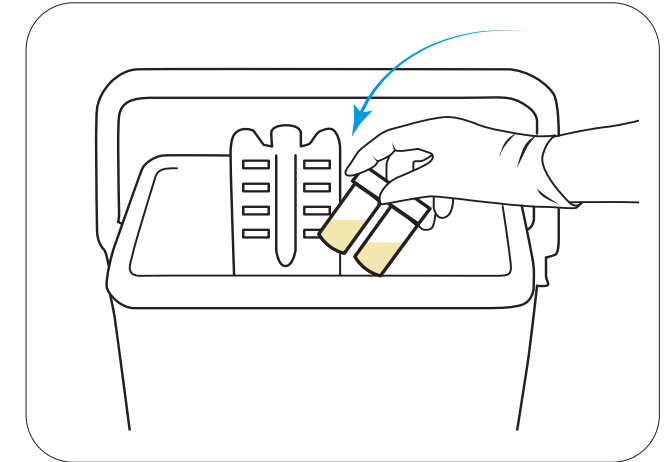
DISCARD:

Discard the first 2-3 squirts of milk from the teat.



COLLECT:

Hold the sample container at a 45 degree angle, and half fill with milk.



START TEST:

Start Mastatest the same day, or refrigerate milk sample for later testing.



For more information mastatest.com/user-guides or support@mastatest.com